

Release Notes - Maintenance

OmniAccess AP1101

Release 2.1.0.91

The following is a list of issues that have been identified and corrected in this AOS-WNG software release. This document is intended to be used as a pre-upgrade guide and does not replace the GA Release Notes which are created for every GA release of software.

Contents

Contents 2

Fixed Problem Reports Between Builds 83 and 91 3

Fixed Problem Reports Between Builds 79 and 82 4

Open Problem Reports and Known Issues 5

New Features Introduced - 2.1.0.91 6

New Features Introduced - 2.1.0.82 9

Technical Support 11

Appendix A: Upgrade Instructions 12

Fixed Problem Reports Between Builds 83 and 91

The following issues were fixed between AOS-WNG Release 2.1.0.83 and 2.1.0.91.

PR	Description
R21ISSUE-7	<p>Summary: Redefine the priorities of log messages.</p> <p>Explanation: Improvements to syslog capability to provide filtering of messages sent to syslog based on priority levels.</p>
R21ISSUE-12	<p>Summary: "support" user needs ability to change password.</p> <p>Explanation: The AP supports a "support" account for troubleshooting purposes in CLI. If a user logs into the AP with the support account, he now has the ability to change the "support" account password.</p>
R21ISSUE-13	<p>Summary: Country code list for time zone setting needs to be updated. Eg. Malta/Sweden not available.</p> <p>Explanation: Additional country codes added:</p> <p>Belgium - BE; United Kingdom - GB; Guam - GU; Hungary - HU; Ireland - IE;</p> <p>Monaco - MC; Macedonia - MK; Malta - MT; Malaysia - MY; Nigeria - NG; Panama - PA;</p> <p>Russia - RU; Sweden - SE; Thailand - TH; Turkey - TR; Vietnam - VN</p>
R21ISSUE-29	<p>Summary: Captive Portal customization should allow JPG format.</p> <p>Explanation: JPG format is now supported. Additional sizing and dimension enhancements added.</p>
R21ISSUE-30	<p>Summary: (Accidentally) Hitting the "backspace" key outside of a text-field will redirect the administrator to the login page of the AP management (login page).</p> <p>Explanation: Pressing the "backspace" key outside of a text field no longer redirects to the login page.</p>
R2ISSUE-54	<p>Summary: Add the option for SVC to take over as PVC.</p> <p>Explanation: Option added to have SVC takeover as PVC.</p>
R21ISSUE-55	<p>Summary: In the "Monitoring" pane, show the AP name instead of the MAC address.</p> <p>Explanation: "Monitoring" pane displays the AP name.</p>

Fixed Problem Reports Between Builds 79 and 82

The following issues were fixed between AOS-WNG Release 2.1.0.79 and 2.1.0.82.

PR	Description
R21ISSUE-15	<p>Summary: Max length of email field in local user creation screen is too short (30 characters).</p> <p>Explanation: It has been increased to 64 characters.</p>
R21ISSUE-16	<p>Summary: Max length of first & last name is too short in local user creation screen (10 characters).</p> <p>Explanation: It has been increased to 35 characters each (according to US Government standards).</p>
R21ISSUE-17	<p>Summary:</p> <p>Captive Portal restrictions:</p> <ol style="list-style-type: none"> 1) Special characters are not allowed in passwords 2) Last name does not allow hyphens or spaces 3) First name does not allow spaces or hyphens 4) Company name does not allow spaces and is limited to 30 characters <p>Explanation:</p> <ol style="list-style-type: none"> 1) Special characters are allowed for captive portal users passwords 2) First names like Jean-Claude and last names e.g. Le-Fleur are allowed. 3) Spaces are allowed for last names, e.g. "John Doe" 4) Company name is allowed 64 characters and spaces. e.g. "Alcatel-Lucent Enterprise Corporation, Argentina".
R21ISSUE-46 R21ISSUE-47	<p>Summary: WLAN changes security mode from Enterprise (WPA) to OPEN on its own.</p> <p>Explanation: Neither encrypt nor decrypt an empty password to keep the same value of password, avoid creating wrong type of WLAN.</p>

Open Problem Reports and Known Issues

The following issues are identified in AOS-WNG 2.1.0.91 Release.

PR	Description	Workaround
BUG-684	Captive portal doesn't support HTTPs redirect; splash page doesn't support URL using HTTPs protocol.	Enter the splash page using the URL format http://www.example.com instead of the format https://www.example.com .

New Features Introduced - 2.1.0.91

The following new features were introduced.

1. Post Mortem Dump - PMD

Post Mortem Dump (PMD) is a troubleshooting method which helps to identify root cause of a core dump and exception pointers after a fatal crash. If PMD is enabled and configured, the AP will send PMD files to a specific TFTP server immediately when there is a key process crashing on the AP.

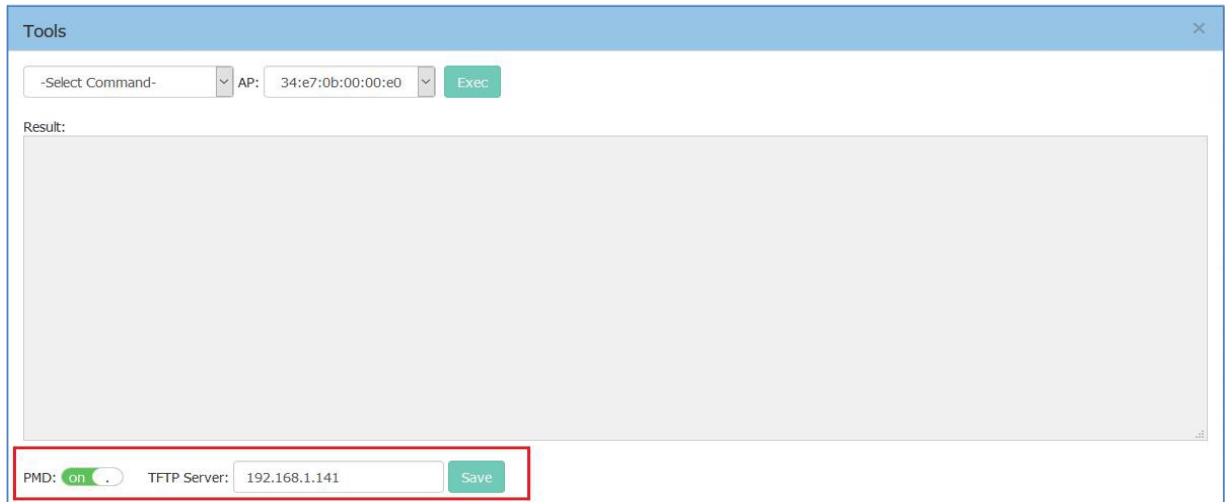
Web UI Usage:

- 1) Click the Tools link in the main page



Tools link

- 2) Configure PMD



PMD Configuration Window

Table: Key word specification in PMD Window

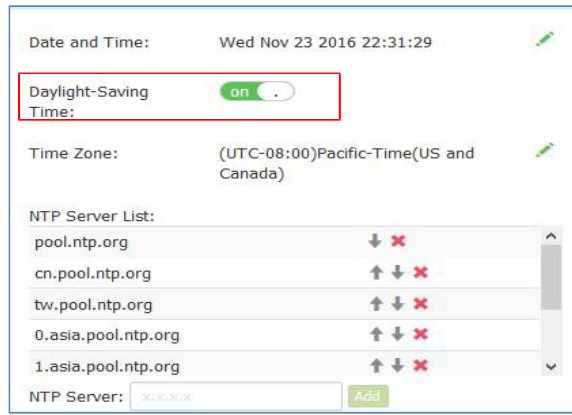
PMD: <input checked="" type="checkbox"/>	Enable/Disable PMD files sending.
TFTP Server	Specify the TFTP server to which PMD files will be sent.

Usage Guidelines:

- 1) By default, sending PMD files to an external TFTP server is disabled.
- 2) The PMD file name gives the application that crashed. For example a PMD file named “pmd-led_ctrl-2016.11.20-16:57:45”, “led_ctrl” is the application crashed.
- 3) PMD files are coding level information, it is suggested to send them to service & support for analysis.

2. Daylight Saving Time

An option has been added to enable/disable daylight saving time on the System main page.



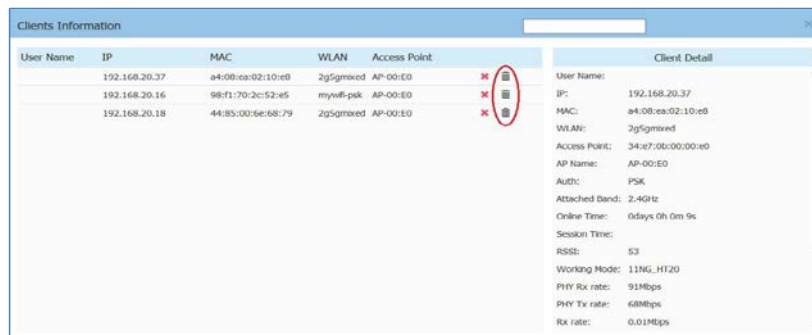
Daylight-Saving Time

The daylight saving time (DST) varies from different time zones. The DST of supporting time zones is enabled automatically by default, while other time zones are not editable on DST.

3. Disconnect a client from the wireless network

Previously there was no method to force a user or device disconnection without having to put that user or device in the Black List. This resulted in that user or device never being able to connect again until the administrator manually removed it from the Black List. An option to easily disconnect a user or device has been added.

Click the Client bar in the main page to enter the Clients Information Window.



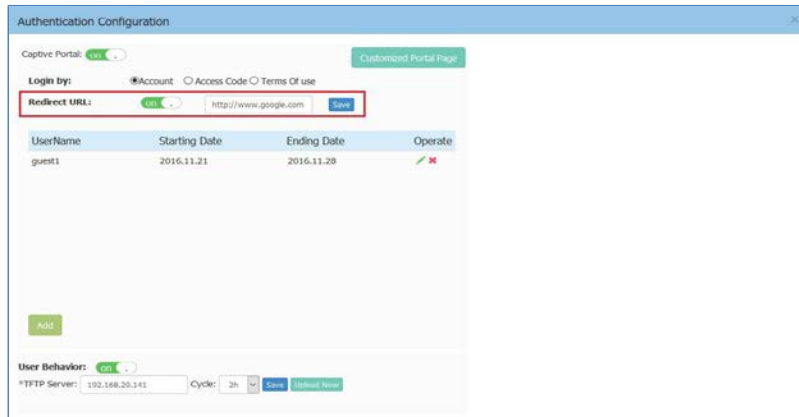
Disconnect a Client

4. Redirect to ADMIN-specified page after successful login

Administrator can specify the web page after successfully logging in.

Go to Access in the main page and click to open the Authentication Configuration Window.

The administrator can enable the URL redirect function and specify the redirect page in the Authentication Configuration Window.



Redirect to ADMIN-specified URL

New Features Introduced - 2.1.0.82

The following new features were introduced.

1. Post Mortem Dump - PMD

Post Mortem Dump (PMD) is a troubleshooting method which helps to identify root cause of a core dump and exception pointers after a fatal crash. If PMD is enabled and configured, the AP will send PMD files to a specific TFTP server immediately when there is a key process crashing on the AP.

Web UI Usage:

3) Click the PMD link in the main page



Figure 1 PMD link

4) Configure PMD

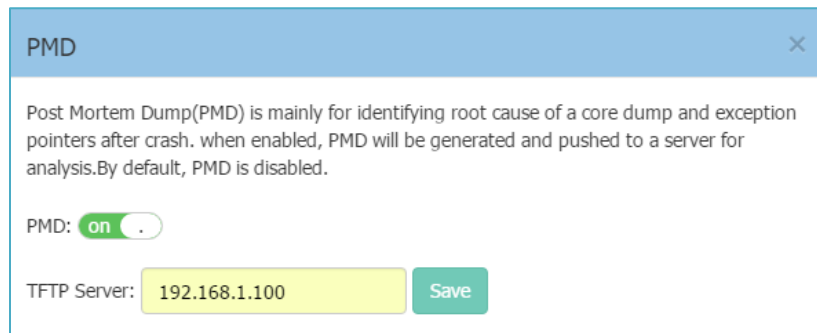


Figure 2 PMD Configuration Window

Table: Key word specification in PMD Window

PMD: <input checked="" type="checkbox"/>	Enable/Disable PMD files sending.
TFTP Server	Specify the TFTP server to which PMD files will be sent.

Usage Guidelines:

- 4) By default, sending PMD files to an external TFTP server is disabled.
- 5) The PMD file name gives the application that crashed. For example a PMD file named “led_ctrl.11. core”, “led_ctrl” is the application crashed.
- 6) PMD files are coding level information, it is suggested to send them to service & support for analysis.

Note: PMD file naming format is planned to be changed to “pmd-process name-date-time”, such as “pmd-led_ctrl-2016.11.20-16:57:45” in the next release.

2. Guest Operator Account Privileges

Added a new web GUI for the guest operator account that only allows for the creation and deletion of guest users for the AP.

3. Syslog Error Messages

To reduce the many error level syslog messages after configuring or modifying a VLAN ID, the log messages of the WAM module have been downgraded to Debug level.

Technical Support

Alcatel-Lucent technical support is committed to resolving our customer's technical issues in a timely manner. Customers with inquiries should contact us at:

Region	Phone Number
North America	1-800-995-2696
Latin America	+1-877-919-9526
European Union	+800 00200100 (Toll Free) or +1(650)385-2193
Asia Pacific	+65 6240 8484

Email : ebg_global_supportcenter@alcatel-lucent.com

Internet: Customers with service agreements may open cases 24 hours a day via the support web page at: support.esd.alcatel-lucent.com.

Upon opening a case, customers will receive a case number and may review, update, or escalate support cases on-line. Please specify the severity level of the issue per the definitions below. For fastest resolution, please have telnet or dial-in access, hardware configuration—module type and revision by slot, software revision, and configuration file available for each switch.

Severity 1 - Production network is down resulting in critical impact on business—no workaround available.

Severity 2 - Segment or Ring is down or intermittent loss of connectivity across network.

Severity 3 - Network performance is slow or impaired—no loss of connectivity or data.

Severity 4 Information or assistance on product feature, functionality, configuration, or installation.

enterprise.alcatel-lucent.com - Alcatel-Lucent and the Alcatel-Lucent Enterprise logo are trademarks of Alcatel-Lucent. To view other trademarks used by affiliated companies of ALE Holding, visit: enterprise.alcatel-lucent.com/trademarks. All other trademarks are the property of their respective owners. The information presented is subject to change without notice. Neither ALE Holding nor any of its affiliates assumes any responsibility for inaccuracies contained herein.

Appendix A: Upgrade Instructions

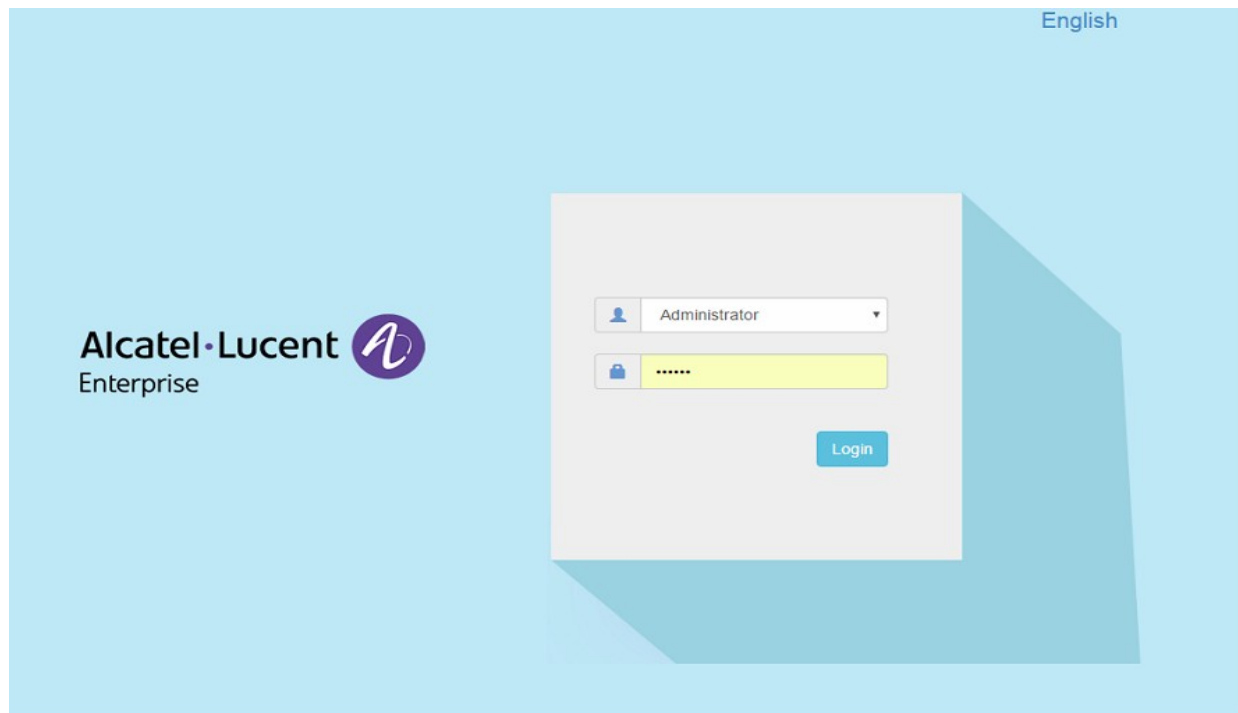
Passwords related to the operation of the OAW-AP1101 are not stored securely in software version 2.1.0.67. To resolve this issue the OAW-AP1101 software **MUST** be upgraded to the latest software version available from customer support. Please Visit <https://support.esd.alcatel-lucent.com/> to get the latest software and follow the upgrade instructions below.

The two cases below describe the Syslog messages that will be seen when an AP running software version 2.1.0.67 is detected in a group with another AP running software version 2.1.0.68 or higher.

- Case1: In a group, AP-00:e0 is acting as the PVC running software version 2.1.0.68 or higher; AP-05:30 running software version 2.1.0.67 is detected in the group:
PVC generates an Error level log message: “AP-05:30 with incompatible software is trying to join the group, please upgrade it!”
- Case2: In a group, AP-05:30 is acting as the PVC running software version 2.1.0.67; AP-00:e0 running software version 2.1.0.68 or higher is detected in the group:
AP-00:e0 generates a Critical level log message: “Some APs in the network are running incompatible software. To avoid network interruptions, an upgrade to the latest software is strongly recommended!”.

Software Upgrade Instructions

1. Login to AP using Administrator account with default password ‘admin’.



2. Click on the AP tab to open up the AP Configuration page.

Alcatel-Lucent Enterprise

AP Group : Demo - 192.168.92.20
Calabasas_SLAB

Administrator | Logout | About | Help | English

Tools | Polling Cycle: 30s

WLAN			AP		
WLAN Name	Status	Clients	Primary Name	Status	Clients
HAN-DEMO_1x	On	0	AP_13	Working	0
			AP_12	Working	0
			AP_11	Working	0

Monitoring

Throughput(Mbps)

Client Band

Client Health

System

Wireless

Access

3. On AP Configuration Page, click Upgrade All Firmware.

AP Configuration

Primary Name	IP	Firmware	Operate
PVC			
AP_13	192.168.92.59(AP) 192.168.92.20(M)	2.1.0.65	
SVC			
AP_12	192.168.92.53	2.1.0.65	
MEMBER			
AP_11	192.168.92.58	2.1.0.65	
Joining			

Detailed Information

APName: AP_13 [Edit](#)

Location: [Edit](#)

Status: Working

Role in Group: PVC

Serial Number: WKS163500021

Model: OAW-AP1101

Firmware: 2.1.0.65

Upgrade Time: Tue Sep 6 14:49:21 UTC 2016

Upgrade Flag: Success

IP Mode: dhcp [Edit](#)

IP: 192.168.92.59

Netmask: 255.255.255.0

Default Gateway: 192.168.92.254

Clear All Configuration | Backup All Configuration | Restore All Configuration | Upgrade All Firmware

4. Select the firmware file and click **Upload To All**, this will upgrade the firmware and reboot the AP.

The screenshot shows the 'AP Configuration' window with a table of APs and an 'Update Firmware' dialog box. The table lists APs with their primary names, IP addresses, and firmware versions. The dialog box has a warning: 'Don't turn off the power during the upgrade process!' and options for 'Image File' and 'Image File URL'. A 'Choose File' button is highlighted with a red arrow, and a red text box below it says 'Select the firmware file and click Upload to All.' The dialog also shows a file named 'hos-r21-osupgrade-65.bin' with a size of 13.56 MB and 'Remove' and 'Upload To All' buttons.

Primary Name	IP	Firmware	Operate
PVC			
AP_13	192.168.92.59(AP) 192.168.92.20(M)	2.1.0.65	cfg firmware reboot
SVC			
AP_12	192.168.92.53	2.1.0.65	cfg firmware reboot
MEMBER			
AP_11	192.168.92.58	2.1.0.65	cfg firmware reboot
Joining			

5. Log into the AP group and clear the configuration by clicking **Clear All Configuration** and confirm the reboot. **NOTE:** This step erases the configuration for all the APs in the group. It is only MANDATORY when upgrading an AP from software version 2.1.0.67 to a higher version.

The screenshot shows the 'AP Configuration' window with a table of APs and a 'Detailed Information' panel. The table lists APs with their primary names, IP addresses, and firmware versions. The 'Detailed Information' panel shows details for AP-07:00, including APName, Location, Status, Role in Group, Serial Number, Model, Firmware, Upgrade Time, Upgrade Flag, IP Mode, IP, Netmask, and Default Gateway. A red arrow points to the 'Clear All Configuration' button at the bottom of the interface.

Primary Name	IP	Firmware	Operate
PVC			
AP-07:00	192.168.102.160(AP) 10.0.0.1(M)	2.1.0.77	cfg firmware reboot
SVC			
AP-06:A0	192.168.102.159	2.1.0.77	cfg firmware reboot
MEMBER			
AP-06:B0	192.168.102.161	2.1.0.77	cfg firmware reboot
Joining			

Detailed Information

APName: AP-07:00 [Edit](#)

Location: [Edit](#)

Status: Working

Role in Group: PVC

Serial Number: WKS163510004

Model: OAW-AP1101

Firmware: 2.1.0.77

Upgrade Time: Tue Sep 27 23:25:14 UTC 2016

Upgrade Flag: Success

IP Mode: dhcp [Edit](#)

IP: 192.168.102.160

Netmask: 255.255.255.0

Default Gateway: 192.168.102.254

Additional Upgrade Information for APs with software version 2.1.0.67

When adding an AP(s) with software version 2.1.0.67 to an existing group of APs with a software version higher than 2.1.0.67, the APs with software version 2.1.0.67 must be upgraded and the configuration cleared.

There are two scenarios for adding APs to an existing AP group:

- A) The existing group has a minimal configuration which can be easily cleared and reconfigured. In this case perform the following steps:
 - 1) Add the new APs to the group.
 - 2) Upgrade the APs to the newer software version.
 - 3) Clear the configuration and reboot as described earlier.

- B) The existing group has an extensive configuration that needs to be preserved. In this case, there are 2 options.

Option 1:

- 1) Backup the existing configuration.
- 2) Add the new APs to the group.
- 3) Upgrade the APs to the newer software version.
- 4) Clear the configuration and reboot as described earlier.
- 5) Restore the configuration.

Option 2:

- 1) Use an isolated network, not connected to the existing AP's network.
- 2) Power up the APs and allow them to form their own group.
- 3) Upgrade the APs to the newer software version.
- 4) Clear the configuration and reboot as described earlier.
- 5) Move the APs to the existing network.

NOTE: The backup and restoration of an existing configuration is only supported with a software version higher than 2.1.0.67. All APs with a configuration based on 2.1.0.67 must have their configuration cleared.